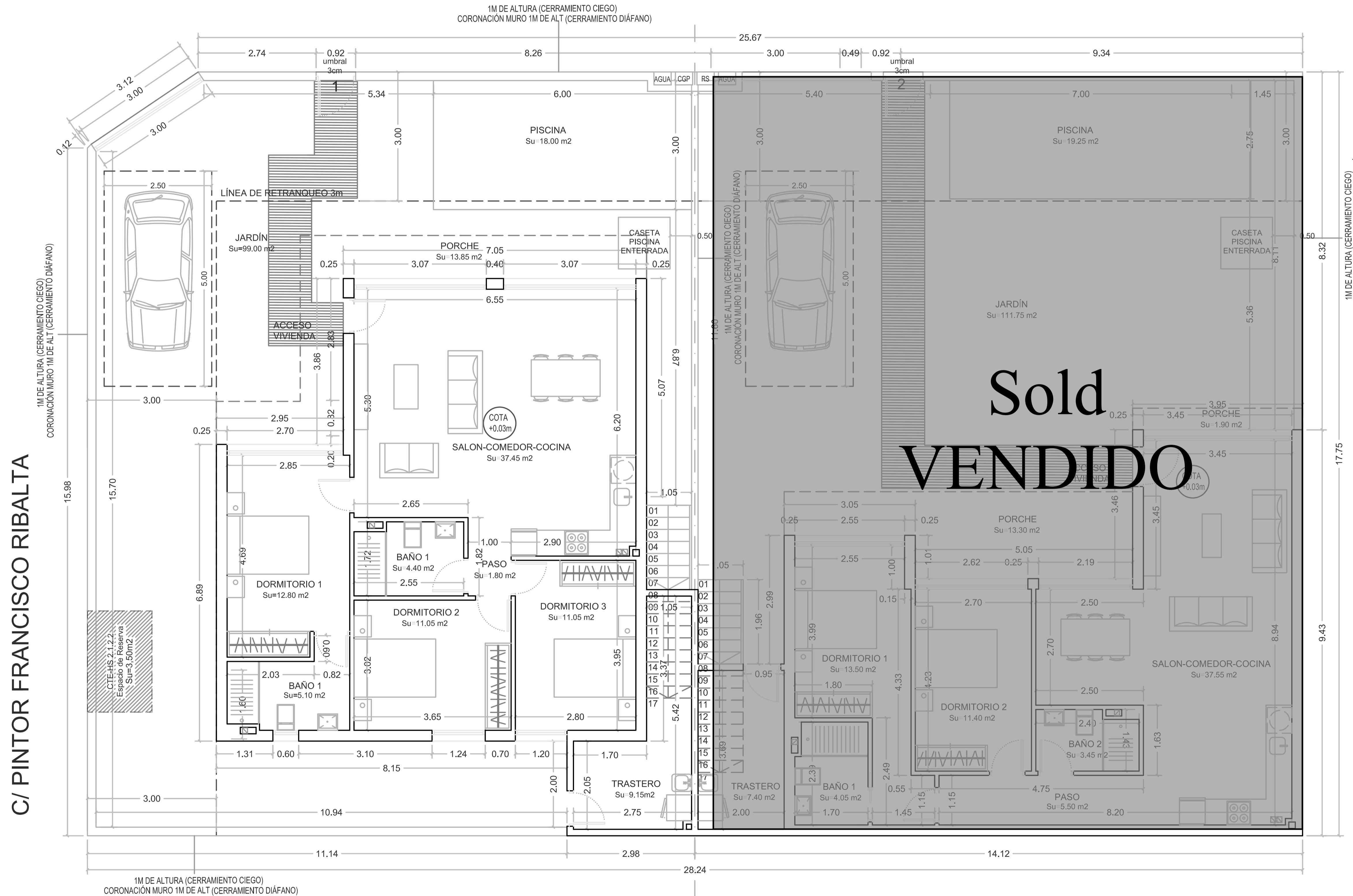


C/ JOSE MARÍA PÁRRAGA



**Sold  
VENDIDO**

**Cuadro de superficies**

Vivienda	Planta.	Uso.	S. Util	S. Const.
1	Baja	Vivienda.	83.65 m <sup>2</sup>	95.44 m <sup>2</sup>
		Porche.	13.85 m <sup>2</sup>	13.85 m <sup>2</sup>
		Trastero	9.15 m <sup>2</sup>	11.30 m <sup>2</sup>
<b>TOTAL</b>			<b>106.65 m<sup>2</sup></b>	<b>120.59 m<sup>2</sup></b>
2	Baja	Vivienda.	75.45 m <sup>2</sup>	88.24 m <sup>2</sup>
		Porche.	15.20 m <sup>2</sup>	15.20 m <sup>2</sup>
		Trastero	7.40 m <sup>2</sup>	8.76 m <sup>2</sup>
<b>TOTAL</b>			<b>98.05 m<sup>2</sup></b>	<b>112.20 m<sup>2</sup></b>
Primera	Vivienda.	2.80 m <sup>2</sup>	3.51 m <sup>2</sup>	
	Pérgola	24.00 m <sup>2</sup>	24.00 m <sup>2</sup>	
<b>TOTAL</b>			<b>26.80 m<sup>2</sup></b>	<b>27.51 m<sup>2</sup></b>
<b>TOTAL</b>			<b>231.50 m<sup>2</sup></b>	<b>260.30 m<sup>2</sup></b>

**SUPERFICIES PARCELAS**

VIVIENDA Nº1 =	248.30 m <sup>2</sup>
VIVIENDA Nº2 =	250.71 m <sup>2</sup>
<b>TOTAL =</b>	<b>499.01 m<sup>2</sup></b>

Plot 1 - corner plot 3/2 with private pool  
329,950